

\$169,900 - Lot-12 Pritchard Road, Miramar Beach

MLS® #895813

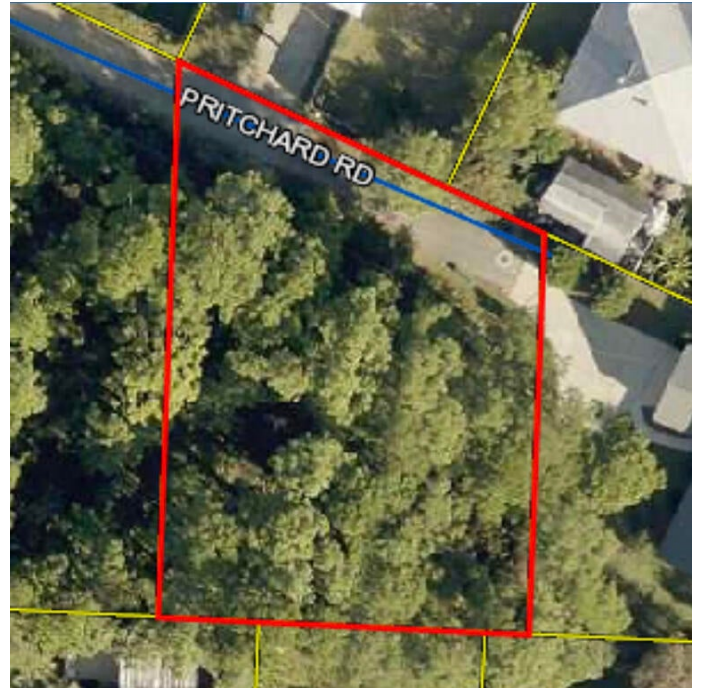
\$169,900

Bedroom, Bathroom, 13,939 sqft

Land on 0.32 Acres

DOROTHY BOWEN ESTATES, Miramar Beach, FL

DO NOT ENTER PROPERTY UNLESS YOU HAVE PERMISSION!! Great lot in Miramar Beach!! The end of this street is quiet with only two houses and the vacant land. This land is two lots, with only the one lot currently available. Wonderful area.



Essential Information

MLS® #	895813
Price	\$169,900
Sold Price	\$169,900
Date Sold	2022-06-06
Days until Sold	52
Square Footage	13,939
Acres	0.32
Type	Land
Sub-Type	Vacant Land
Status	Sold

Community Information

Address	Lot-12 Pritchard Road
Area	15 - Miramar/Sandestin Resort
Subdivision	DOROTHY BOWEN ESTATES
City	Miramar Beach
County	Walton
State	FL
Zip Code	32550

Amenities

Utilities None

School Information

Elementary Van R Butler
Middle Emerald Coast
High South Walton

Additional Information

Days on Website 766
Zoning Resid Single Family
HOA Fees 0.00

Listing Details

Listing Office Paradise Realty and Development LLC