

# \$335,000 - 5.73 Acres FI-20, Freeport

MLS® #882948

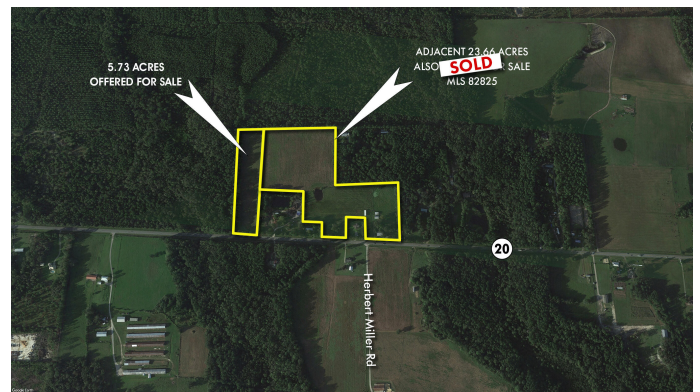
**\$335,000**

Bedroom, Bathroom, 249,599 sqft

Land on 5.73 Acres

N/A, Freeport, FL

5+ PRIME ACRES!! Spectacular acreage in the rapidly growing community of Freeport in Walton County, Florida, located on Highway 20 less than 3 miles to the East of Highway 331, offering easy access not only to the conveniences and new Publix of Freeport, but also to the surrounding communities in every direction, including the beautiful beach villages of South Walton County and Santa Rosa Beach, Scenic 30A, Destin, multiple military bases, the I-10 corridor, Panama City Beach, and the area's newest airport, Northwest Florida Beaches International Airport (ECP). Please inquire for further details.



## Essential Information

MLS® #	882948
Price	\$335,000
Sold Price	\$275,000
Date Sold	2022-09-30
Days until Sold	364
Square Footage	249,599
Acres	5.73
Type	Land
Sub-Type	Vacant Land
Status	Sold

## Community Information

Address	5.73 Acres FI-20
Area	20 - Freeport

Subdivision	N/A
City	Freeport
County	Walton
State	FL
Zip Code	32439

### **Amenities**

Utilities	Electric
-----------	----------

### **School Information**

Elementary	Freeport
Middle	Freeport
High	Freeport

### **Additional Information**

Days on Website	959
Zoning	Horses Allowed, Resid Single Family, See Remarks
HOA Fees	0.00

### **Listing Details**

Listing Office	Somers & Company
----------------	------------------